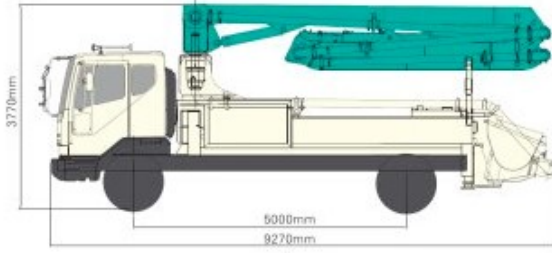
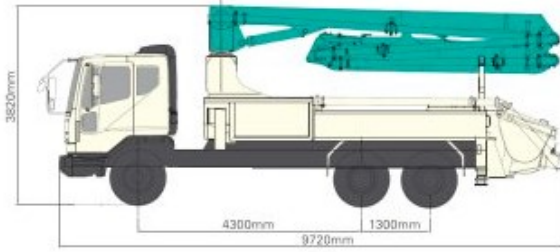


# SPECIFICATIONS

## DIMENSIONS



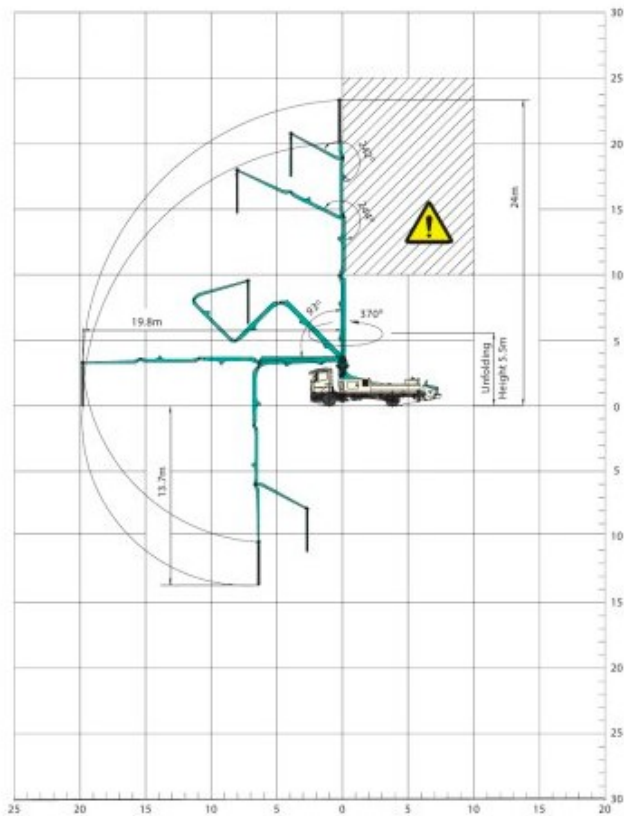
Front Axle Loading Weight	6,100kg
Rear Axle Loading Weight	10,400kg



Front Axle Loading Weight	5,200kg
Rear Axles Loading Weight	13,300kg

\* Weight and dimension figures here are subject to change on various chassis option and additional axle application etc.

## WORKING RANGE



Don't use in caution area

UNIT : m

## PUMP

Pump Cell	1409
Control System	Closed Free Flow Hydraulic
Main Pump	A4VG125
Concrete Cylinder (mm)	Dia.200 Stroke 1,400
Drive Cylinder (mm)	Dia.110 Stroke 1,400
Theoretical Concrete Output (m <sup>3</sup> /h)	90
Theoretical Concrete Pressure (bar)	70
Stroke No. (per minute)	35
Transfer Tube Type	S-Tube, S2018 (Dia. 200-180mm)
Hopper Volume (liter)	600

## BOOM

Folding Type	4 Stage ZR-folding
Slewing Angle	370deg.
Max. Vertical Reach	24m
Max. Horizontal Reach	19.8m
Max. Depth Reach	13.7m (incl. End Hose 3m)
Unfolding Height	5.5m
End Hose Length	3m
Delivery Pipe Dia.	125mm

## OUTRIGGER

Front Outrigger	One Stage Diagonal Extension Full Spread Width 5.3m
Rear Outrigger Type	Fixed Jack Cylinder Full Spread Width 2.53m

## OUTRIGGER SPREAD

